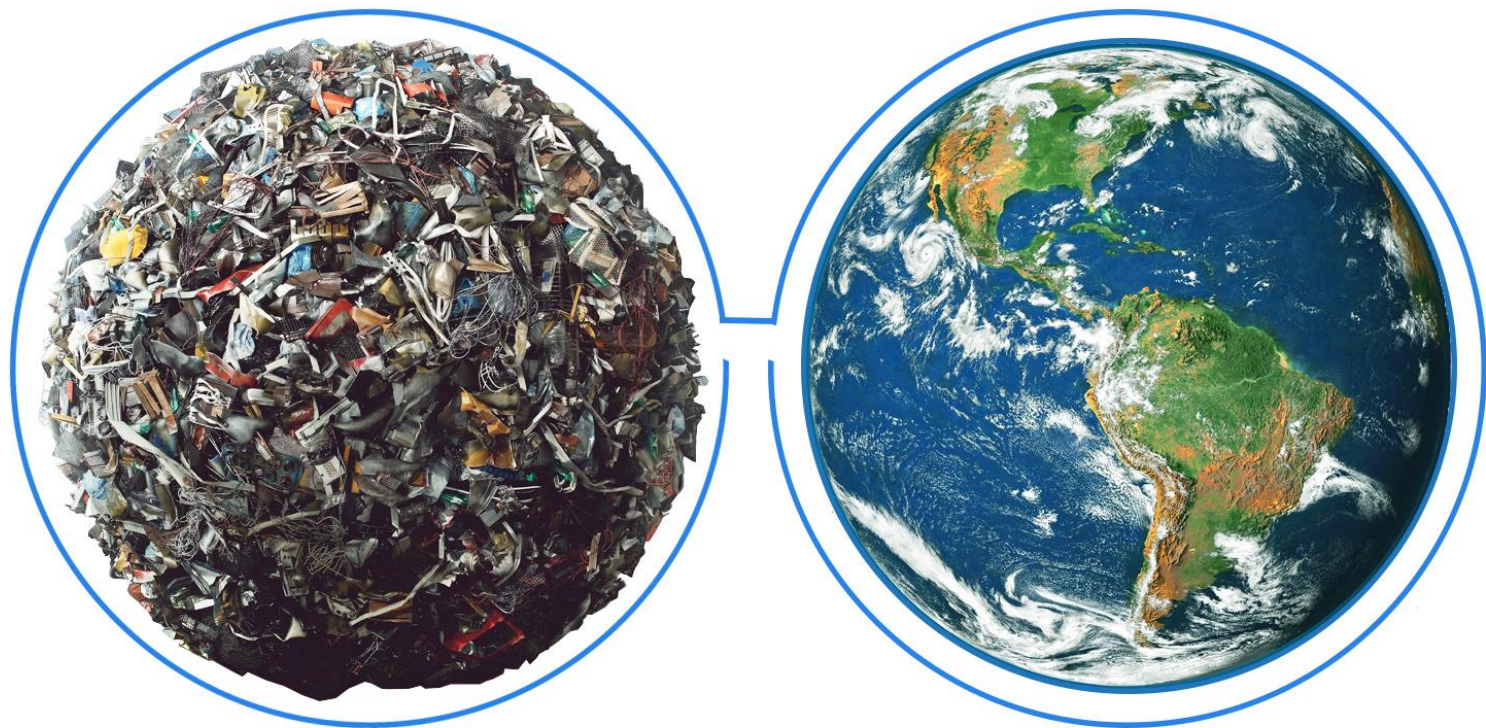




**SYNTECH
BIOENERGY LLC**
Resourceful. Renewable. Responsible.

THE PROBLEM



CURRENT SOLUTIONS



ADVANCED SOLUTIONS

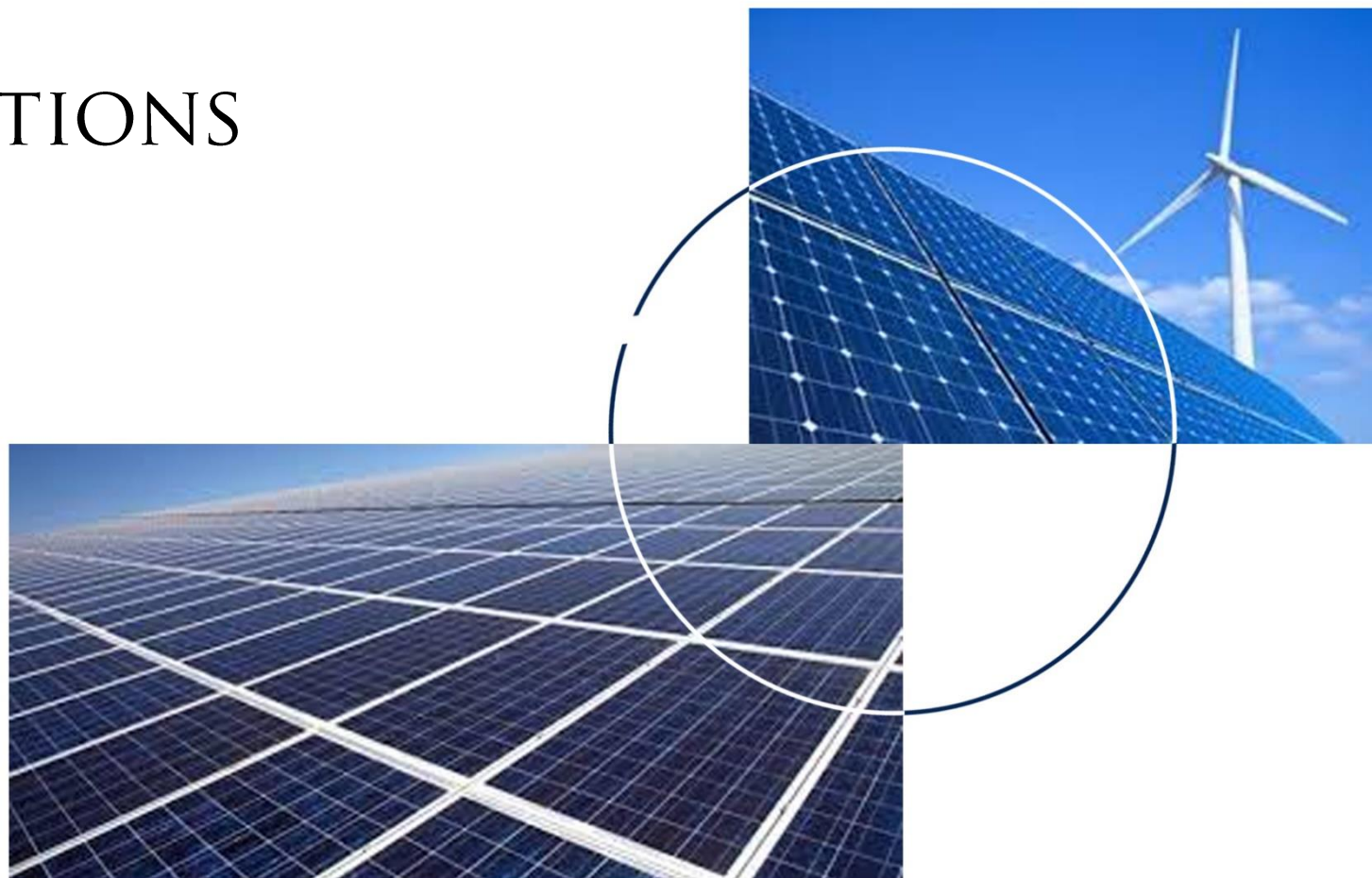


PROBLEMATIC SOLUTIONS



INEFFECTIVE SOLUTIONS

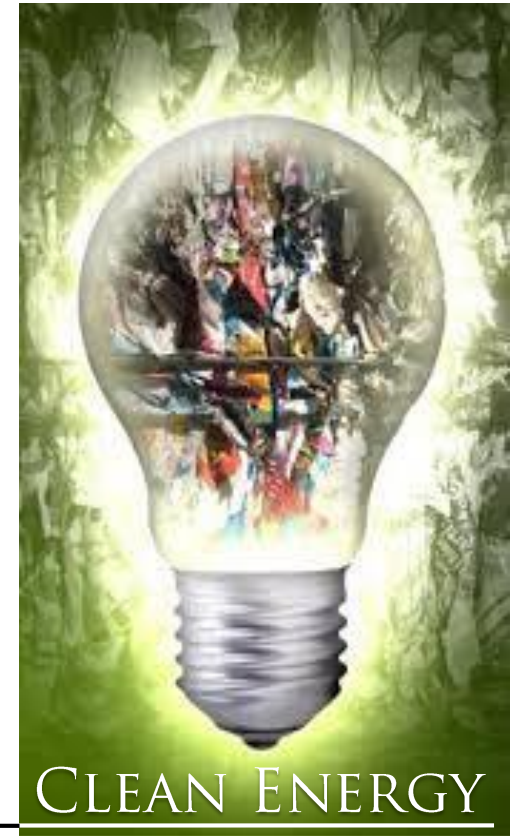
- INTERRUPTED ●
- WEATHER ●
- DEPENDENT ●
- BIG FOOTPRINT ●



SYNTECH SOLUTIONS SAVING THE PLANET ONE KILOWATT AT A TIME



BY PRODUCING CLEAN ENERGY

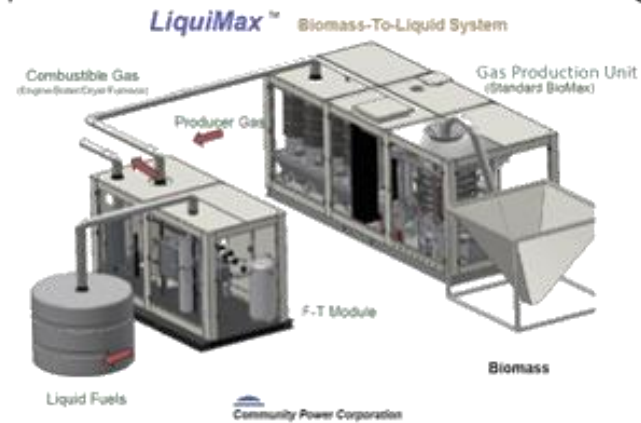


SYNTECH SOLUTIONS MOST ADVANCED TECHNOLOGIES

BIOMAX[®]



LIQUIMAX[®]

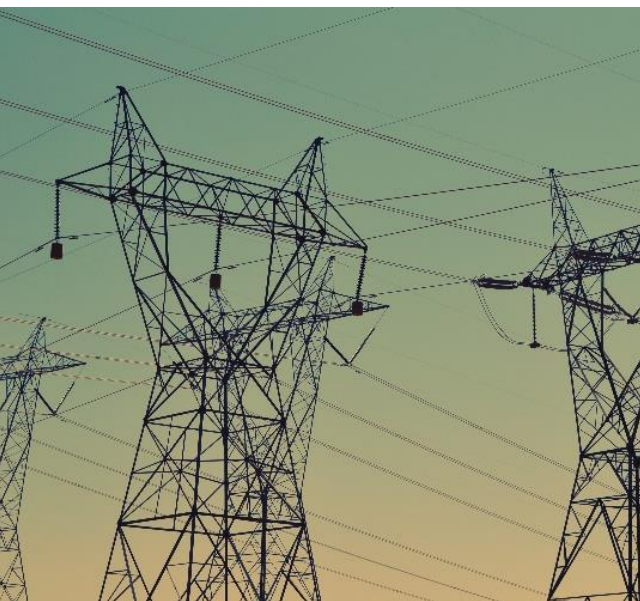


FLUIMAX[®]



SYNTECH SOLUTIONS

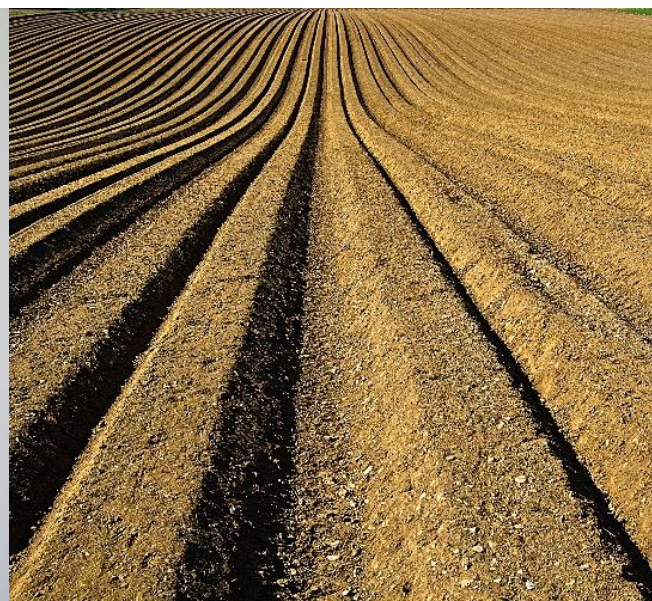
POWER



HEAT



FERTILIZER



FUEL

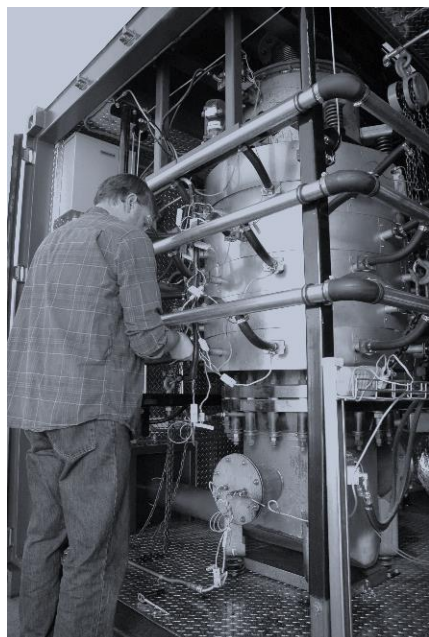


BIOMAX[®]

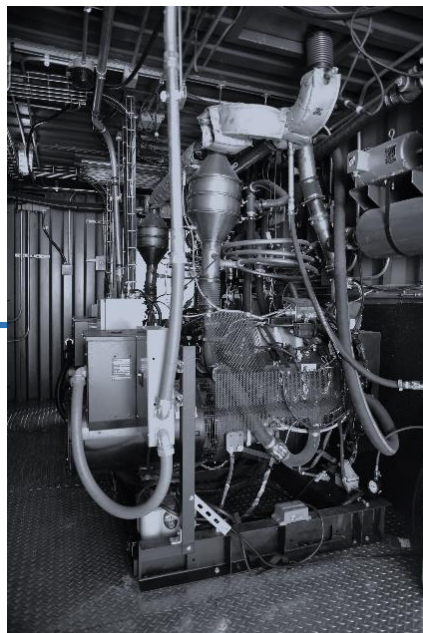


- SMALL
- SIMPLE
- QUIET
- SCALABLE

BIOMAX[®]



RIGIDLY CONTROLLED
PRODUCES CLEAN SYNGAS



EFFICIENT OPERATION
80%+ IN CHP MODE



MODULAR & SCALABLE
EASILY REMOVED AND TRANSPORTED

BIOMAX[®]



EASILY SERVICED
DURABLE AND DEPENDABLE



EASILY OPERATED
FULLY AUTOMATED, REMOTELY CONTROLLABLE

BIOMAX[®] FEEDSTOCK

WOOD CHIPS



NUT SHELLS



COCONUT SELLS



OLIVE PITTS

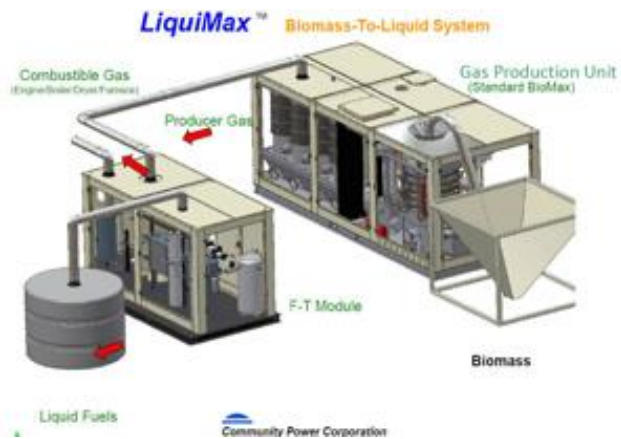


LIQUIMAX[®]

GAS TO LIQUID FUELS

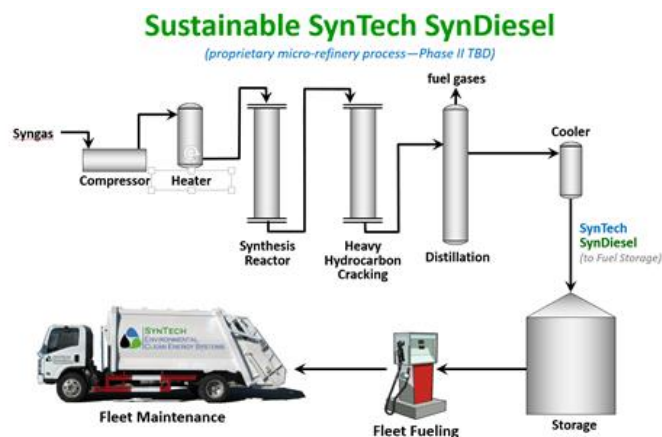
SMALL SCALE MICRO-REFINERY

- BIOMASS TO FUELS
- LANDFILL FLARE GAS TO FUELS
- WELLHEAD FLARE GAS TO FUELS
- DIGESTER GAS TO FUELS
- NATURAL GAS TO FUELS



LIQUIMAX[®]

CLEAN AND READY TO USE FUELS



- DIESEL
- JET FUEL



MEETS ALL PUBLISHED FUELS STANDARDS (*INCLUDING US MILITARY SPEC*)

DOES NOT REQUIRE BLENDING OR ENGINE MODIFICATION

FLUIMAX[®]

FLUIDIZED BED REACTOR



SCALABLE FROM 1MWE TO >25 MWE



1 MWE CHP
*SKID MOUNTED
FACTORY ASSEMBLED*

SCALABLE
*TO 5 MWE SKID MOUNTED
TO 25 MWE+ DESIGN/BUILD*



FLUIMAX PROBLEMATIC FEEDSTOCK



MSW



WHEAT STRAW



RDF



POULTRY LITTER

SYNTECH ADVANCED TECHNOLOGIES PROVEN & COMMERCIALIZED



DIXON RIDGE
2 MILLION POUND
AUTOMATED FEEDSTOCK STORAGE
AND DELIVERY SYSTEM



PREMIERE MUSHROOM
3 BIOMAX® GEN 1 UNITS



MILITARY APPLICATION
SINGLE BIOMAX® GEN 1



DIXON RIDGE
BIOMAX® GEN 1 & GEN 2 UNITS



AND IT ALL STARTED HERE
WITH THE FIRST BIOMAX1.5—
IN 1999!!!

SYNTECH ADVANTAGES

MULTIPLE REVENUE STREAMS

- POWER
- HEAT
- FUELS
- FERTILIZERS
- WASTE REMEDIATION (*TIPPING FEES*)



SYNTECH ADVANTAGES

SUSTAINABLE CLEAN ENERGY

- CONTINUOUS
- UNINTERRUPTED
- DISTRIBUTED
- SCALABLE



SYNTECH ADVANTAGES



- SMALL FOOTPRINT (*165kWE IN 10M X 10M; 1MW IN 20M X 60M*)
- MODULAR (*TRANSPORTABLE & EASY TO RELOCATE*)
- FACTORY ASSEMBLED & TESTED (*OPERATIONAL WITHIN 1 WEEK OF DELIVERY*)
- COMMERCIALY PROVEN (*OVER 50 PRIOR OPERATIONS*)
- AVAILABLE NOW!

SYNTECH GLOBAL ACTIVITY



SYNTECH ISRAEL





THE FUTURE OF SUSTAINABLE CLEAN ENERGY

TODA RABA!

130 W. ILLINOIS AVE.
MORRIS, ILLINOIS 60450
(815) 942-2466
WWW.SYNTECHBIOENERGY.COM